

## ABOUT

FIZZBOT, from Newton Beverage Solutions, is a fully automated beverage dispenser that produces carbonated and non-carbonated drinks from order to sealed cup. Connected directly to POS and third-party delivery platforms, FIZZBOT increases throughput, reduces labor, and ensures every drink is made consistently.

# FIZZBOT

## FULLY AUTOMATED BEVERAGE DISPENSER



### POS CONNECTED

compatible with mobile orders and third-party delivery apps



### FULLY AUTOMATED

cup drop, ice dispense, drink dispense & lidding



### 450 DRINKS/HOUR

one drink finished every eight seconds



### UP TO 28 FLAVORS

supports concentrates, high-ratio flavors, syrups & more



### NO MORE BRIXING

cfv fixed flow valve technology



### MENU CUSTOMIZATION

update & customize recipes instantly with IOT connectivity



### INCREASE REVENUE

reduce operating costs & increase throughput

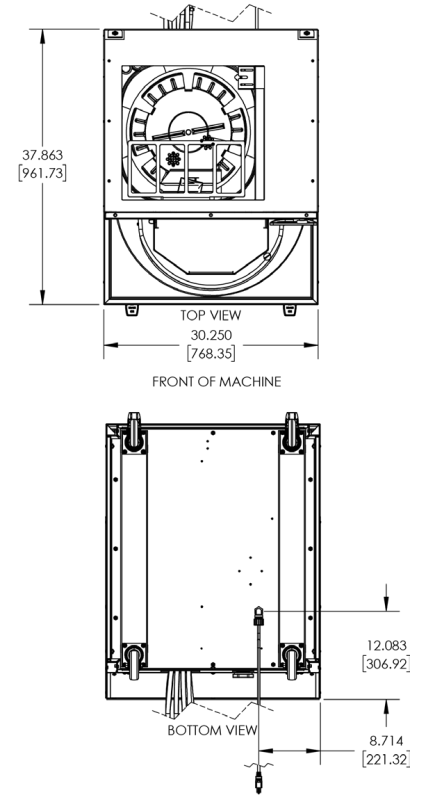
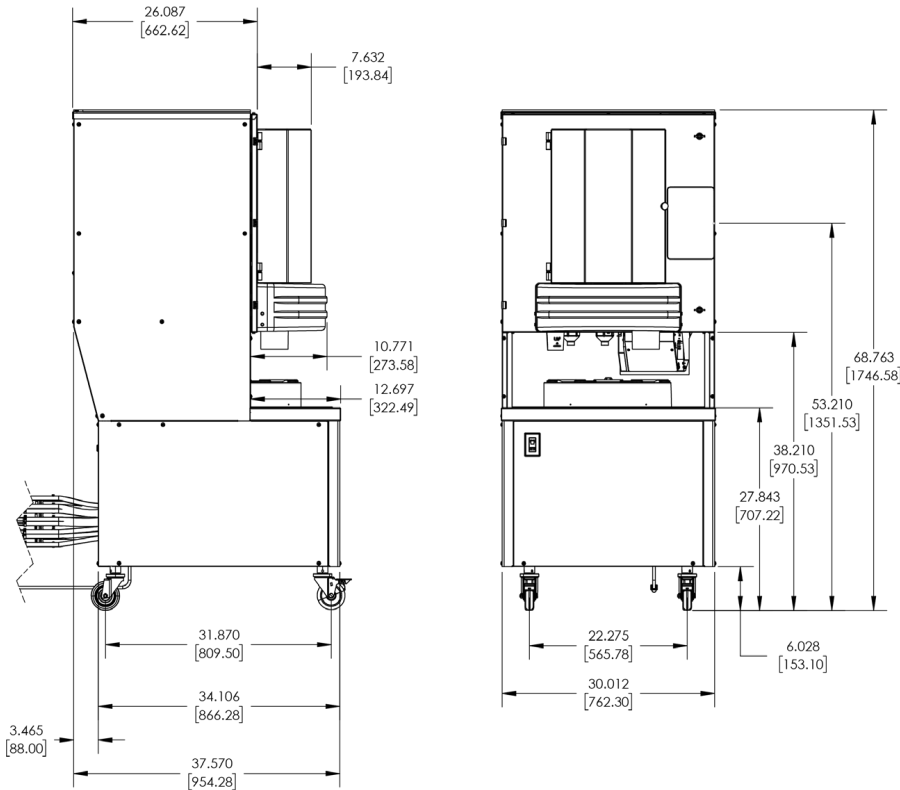
**newton**  
beverage solutions  
MIDDLEBY A Middleby Company



CONTACT US


# FIZZBOT

Fully Automated Beverage Dispenser  
Multi Flavor Carbonated / Uncarbonated



DIMENSIONS		
Width	30"	762 mm
Depth	41.6"	1,056 mm
Height	90"	2,286 mm
Weight	700 lbs	317 lbs
Floor Clearance	6-7"	152-177 mm

\*Mounted on standard casters.

ELECTRICAL SPECIFICATIONS		
Voltage	120 V	 NEMA 5-15P
Frequency	60 Hz	
Current	15 A	
Wattage	1800 W	
Phase	1 ph	
WiFi	Ethernet or Wireless	

One dedicated electrical connection is required. See the electrical chart for the proper electrical requirements. Manufactured to be cord connected. Consult your local electrician for cord and receptacle specifications as local codes allow.

SHIPPING INFORMATION		
Width	48"	762 mm
Depth	48"	1,056 mm
Height	90"	2,286 mm
Weight	756lbs	317 lbs

This unit may be manufactured with other electrical characteristics and may have additional regulatory agency approvals. Consult the local distributor for other electrical characteristics and agency approvals based on specific electrical and country requirements. **(For exact electrical information, approval marks, always refer to the data label of the unit.)**

**Continuing research results in steady improvements; therefore, these specifications are subject to change without notice.**

### Pending Agency Listings

Approvals may not apply to every model configuration. Approvals may vary based on Voltage, Model Option and Accessory selection. Please contact your local distributor for more information.

